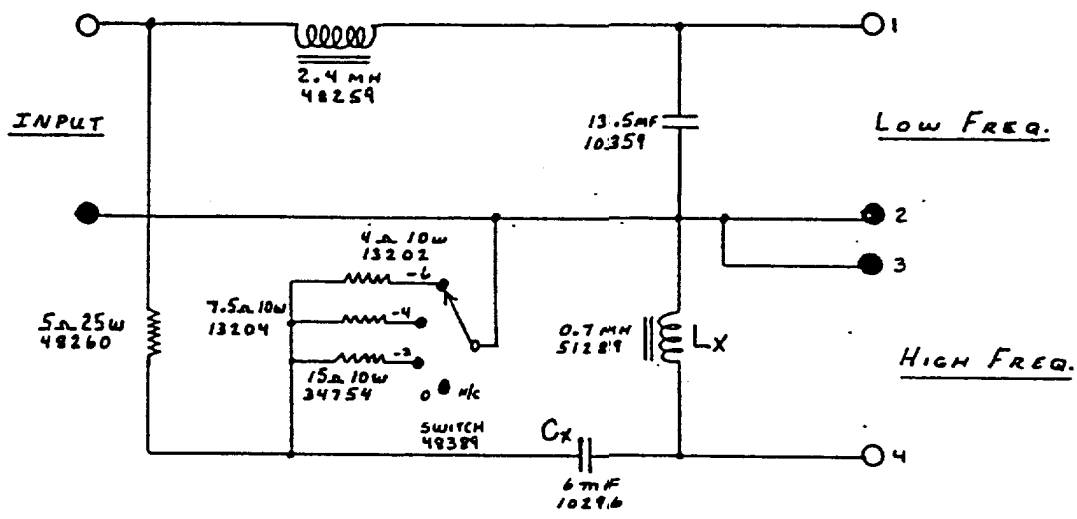


SPECIFICATIONS: NOTE ①

LOAD Z	LOW PASS	CROSS OVER	HIGH PASS	ATTENUATION
	1 KHZ	1.4 KHZ	2 KHZ	
8	LF -5 HF -15	LF -10 HF -10	LF -15 HF -6	-6, -8, -10, -12

CIRCUIT:



NOTES:

- ① USE STANDARD TEST FIXTURE
- ② TO CONVERT 3122 TO 3122A - REPLACE L_x & C_x WITH VALUES SHOWN (ECN 8618)

E	10-75
C	6-74